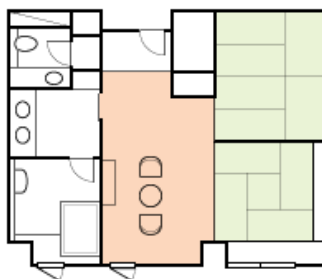


New Chitose Airport
Arrival & departure

「Dedicated Vehicle & Excellent Hotel」 Plan for Wealthy class! 【Tokachigawa/Akanko/Tubetsu/Sapporo】 4nights 5days

< ex. : Accommodation & Guest Room >



Tokachigawa ONSEN SANYOAN Rakuyou (Private Onsen bath in room)

Guest room [Rakuyou] Layout

Ex:Tour price (4night 5days),In case of Select Hotels as below
Price Rate is Calculated based on 16th/Nov/2015 departure

	Price/person (2persons in 1room) JPY 299,800 / person
Day 1	Sanyoan Rakuyou/ Private Onsen bath in room)
Day 2	Akan TURUGA Bessou Hinano-za [Mizuumino-za]
Day 3	JR tower Nikko Sapporo(corner deluxe twin)
Day 4	JR tower Nikko Sapporo(corner deluxe twin)

Including : Hotel fee 4night 5days(4 breakfast,3 dinner)
Alphard with Refrigerator, Toll road/parking lot fee,
Driver's lodging expenses, Admission fee which Schedule
of itinerary , tax

<Dedicated Vehicle : Alphard / Max.Passenger: 7 persons / with the Traction vehicle:in case of passenger is more than 5 persons

Provide Large size Vehicle [High Ace Grand Cabin] in case of Passenger is 8~9 persons .



Alphard



Special Equipment Refrigerator

We will refill Free beverage everyday!
Please drink Anytime!
<Contents>
White wine , Rose wine ,Mineral Water
Some Side dishes & Glasses



Look of Traction Vehicle & Alphard

< Recommend Couese >

※1: Private Open air bath in the Guest Room
※2: Observation bath in the Guest Room

Day	Itinerary	meal	Hotel Selection
1	10:00 Welcome you at New Chitose Air Port Arrival Lobby Tokachi Sightseeing · Feel great scale of Hokkaido at sen-nen-no-mori & Try to play Segway! 15:00 <Tokachigawa ONSEN Stay>	B On board L _____ D Kaiseki	• Sanyoan [Rakuyou] ※2 Nature onsen! • Daiichi Hotel [Toyosutei] ※1 • Kangetsuen ※1 Nature onsen
2	9:00 · Kushiro Shitugen Observatory · Turui Tancho Sanctuary · Akan Lake Tour boat (Viewing Marimo) · Look around Ainu Village 16:00 <Akankohan ONSEN Stay >	B Hotel L _____ D Kaiseki	• Yuukyuu no sato Turuga Honkan ※1 • AkanTuruga Bessou Hinanoza ※1 • Yuukyuuuno sato Turuga ReraKan ※1
3	8:30 · Tubetsu Chimikeppu lake (The Ancient lake loved by Literary master[Miura Ayako]) · Hokkaido ice Pavilion · Asahiyama Zoo (Easy to look Natural figure of Animals) ~Sapporo Tokeidai/Oodori/Aka Renga 17:00 <Sapporo Stay >	B Hotel L _____ D Sukiyaki	• Sapporo Park Hotel [Park in Park/ Room Space :50m ² over] • JR tower Nikkou Sapporo [Corner deluxe twin]
4	Sapporo All day long Free schedule! <Sapporo Stay >	B Hotel L _____ D _____	• Sapporo Park Hotel [Park in Park]50m ² • JR tower Hotel Nikkou Sapporo [Corner deluxe twin]
5	7:30 After breakfast send to Airport 8:30 New Chitose Airport	B Hotel L On board	

Extend Stay OK!

Remark: Course will be Arrangement by your Requirement

contact spk@sapporo-concierge.com
URL <http://www.sapporo-concierge.com>