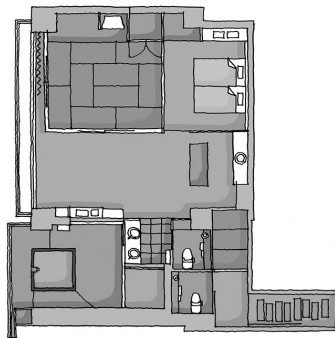


New Chitose Airport
From & to

「Luxury Vehicle and Premium Hotel」 Plan for VIP! 【Souunkyo/Shiretoko/Akanko/Sapporo】 4nights 5days

< ex. : Accommodation >



Ex:Tour price (4night 5days),In case of Select Hotels as below
Price Rate is Calculated based on 16th/Nov/2015 departure

	Price/person (2persons in 1room) 338,000 JPY
Day 1	Souunkaku Grand Hotel [Kafu fl.]
Day 2	Shiretoko Grand Hotel Kitakobushi [Ohotoku Club]
Day 3	Akan Turuga Bessou Hinano-za
Day 4	JR Tower Nikkou Sapporo [Corner deluxe twin]

Akan ONSEN
Akan Turuga Bessou Hina-no-za

Guest room [Mizuumi-no za] Layout

Including : Hotel fee 4night 5days(4 breakfast,3 dinner)
Alphard with Refrigerator, Toll road/parking lot fee,
Driver's lodging expenses, Admission fee which Schedule
of itinerary , tax

<Dedicated Vehicle : Alphard / Max.Passenger: 7 persons / with the Traction vehicle:in case of passenger is more than 5 persons

Provide Large size Vehicle [High Ace Grand Cabin] in case of Passenger is 8~9 persons .



We will refill Free beverage everyday!
Please drink Anytime!
<Contents>
White wine , Rose wine ,Mineral Water
Some Side dishes & Glasses



Alphard

Special Equipment Refrigerator

Look of Traction Vehicle & Alphard

< Recommend Course >

※1: Private Open air bath in the Guest Room
※2: Observation bath in the Guest Room

Day	Itinerary	meal	Hotel Selection
1	10:00 Welcome you at New Chitose AirPort Arrival Lobby • Asahiyama Zoo (Easy to look Nature figure of Animals) • Otokoyama Sakagura museum 16:00 <Souunkyo ONSEN Stay >	B on board L _____ D Kaiseki	• Hotel Taisetsu [Wabou sekka]※1 • Souunkaku Grand Hotel ※1 [Kafu floor]
2	9:00 • Abashiri Tenzouan • Ryuhyoukan (Real Ryuhyo dispray) • Abashiri Kangoku musium • Oshinkoshin Waterfall • Look around Shiretoko goko (In the World heritage area) 16:30 < Shiretoko ONSEN Stay >	B Hotel L _____ D Kaiseki	• Siretoko Grand Hotel Kitakobushi ※1 • Shiretoko Daiichi Hotel ※1 [Shizen-kan]
3	8:30 • Shiretoko Tour boat(Iouzan course) • Kawayu Iouzan • Mashuko Observatory • Akan Lake Tour boat(Viewing Marimo) 16:30 < Akanko ONSEN Stay >	B Hotel L _____ D Kaiseki	• Yuku no sato Turuga Honkan ※2 • Akan Turuga Bessou Hinanoza ※1 • Yuku no sato Turuga ReraKan ※1
4	8:30 • Turui Tancho Sanctuary • Kushiro Shitsugen Observatory Drive to Sapporo • Tokeidai • Oodori • Akarenga < Sapporo Stay >	B Hotel L _____ D Sukiyaki	• Sapporo Park Hotel [Park in Park]50㎡ • JR Tower Nikkou Sapporo [corner deluxe twin]
5	7:30 After breakfast send to Airport 8:30 New Chitose Airport	B Hotel L On board	

Extend Stay OK!

Remark: Course will be Arrangement by your Requirement

Plan code : プひ札阿01JE

contact spk@sapporo-concierge.com
URL <http://www.sapporo-concierge.com>